



PureSpa™

BY INTEX®

INTERNATIONAL

Intex Development Co., Ltd.
8/F, Plaza Westlight Garden
128, Tsimshatsui Street, Kowloon
Hong Kong

Tel: (852) 2321-8388
Fax: (852) 2311-3328
E-mail: info@intex.com.hk
www.intex.com.hk

USA

Intex Recreation Corp.
PO Box 1109
Long Beach, CA 90801-1109
USA

Tel: (562) 598-6888
Fax: (562) 593-8888
E-mail: usa@intex.com
www.intex.com

EUROPE

Intex Trading B.V.
De Vries 11
3715 PH Maarssen NL
The Netherlands

Tel: (31) 358-6828
Fax: (31) 358-6828
E-mail: eu@intex.com
www.intex.com

Intex Trading Co.
Room 1212
111, 113, 115, 117
G Street, Hong Kong

Tel: (852) 2672-1212
Fax: (852) 2672-1212
E-mail: hk@intex.com
www.intex.com

Intex Development Co., Ltd.
2/F, The Hubway
211, 213, 215, 217
G Street, Hong Kong

Tel: (852) 2672-1212
Fax: (852) 2672-1212
E-mail: cn@intex.com
www.intex.com

Intex Development Co., Ltd.
2/F, The Hubway
211, 213, 215, 217
G Street, Hong Kong

Tel: (852) 2672-1212
Fax: (852) 2672-1212
E-mail: tw@intex.com
www.intex.com



LUXURY REDEFINED

©2018 Intex Marketing Ltd. - Intex Development Co., Ltd. - Intex Recreation Corp. All rights reserved. Printed in China. ®™ Trademarks used in some countries of the world under license from Intex Marketing Ltd. to Intex Development Co., Ltd., G PO Box 28826, Hong Kong, and Intex Recreation Corp., PO Box 1446, Long Beach, CA 90801.

INTEX®

THE ULTIMATE SPA EXPERIENCE



INTEX

PureSpa™

BY INTEX®

2019



Thousands of high-strength fibers

Industry standard spa interior has been enhanced with lightweight, high-strength fibers for amazing durability and comfort.

PureSpa™ with Fiber-Tech™ Technology

DESIGNED FOR COMFORT. ENGINEERED FOR DURABILITY.

Introducing Fiber-Tech™ Technology, designed to offer superior structural stability while maintaining a comfortable surface for a luxurious and refreshing spa experience.

Top 3 Advantages of an INTEX PureSpa™

- 

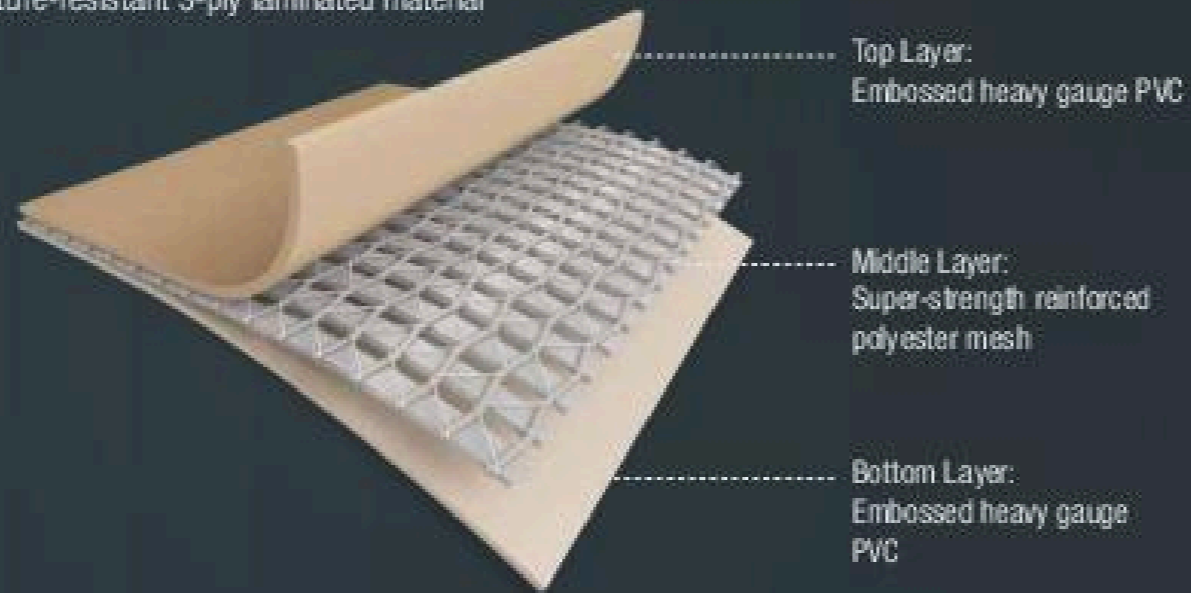
1 Durable Fiber-Tech™ Technology
- 

2 The only inflatable spa with built-in Hard Water Treatment System
- 

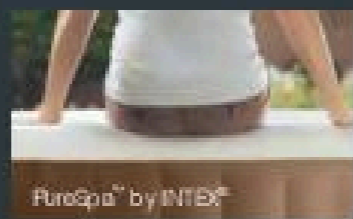
3 Heated air bubble technology

DURABLE EXTERIOR

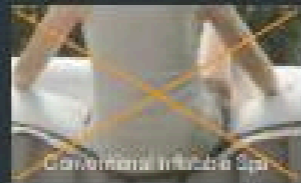
Puncture-resistant 3-ply laminated material



U.S. Patent No. 8,562,773



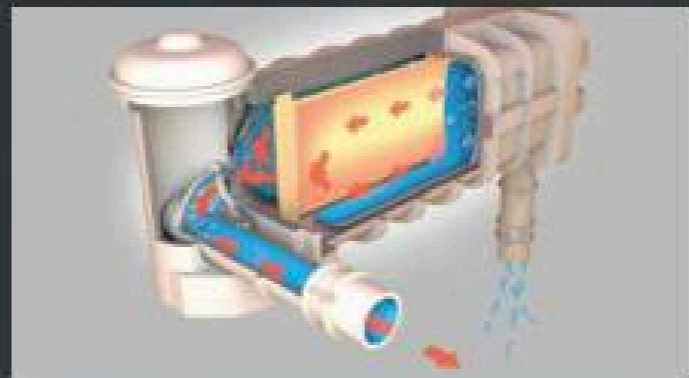
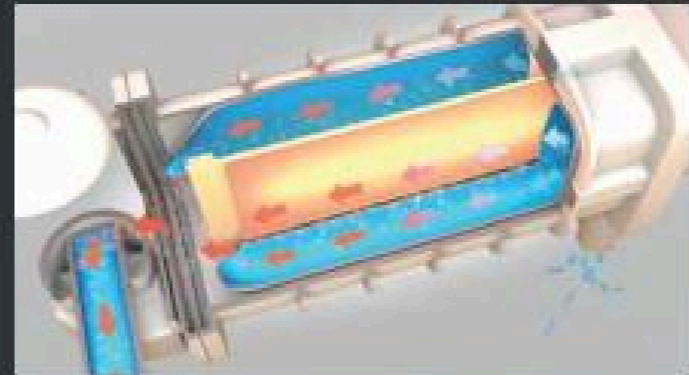
Fiber-Tech™ Technology provides the ultimate comfort and support.



Conventional Inflatable Spa

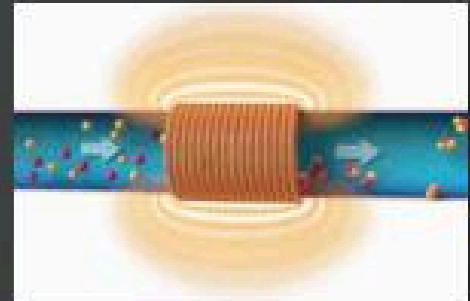
POWERFUL AND SAFE HEATING SYSTEM

The Positive Temperature Coefficient (PTC) heater is designed to maximize heat transfer to the water, while ensuring the highest level of safety, performance and longevity.

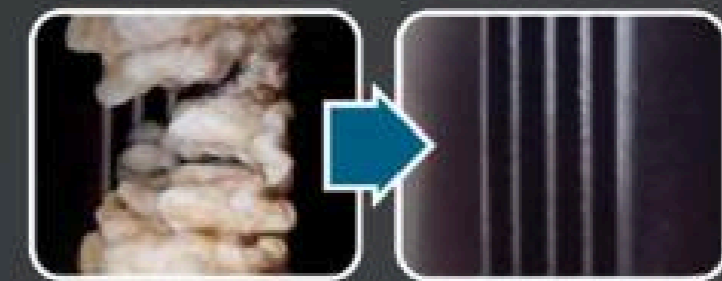


HARD WATER TREATMENT SYSTEM

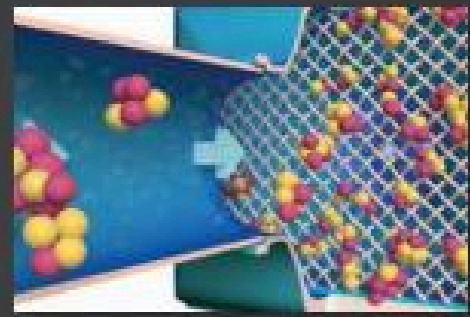
Built-in Hard Water Treatment System makes water gentler on skin, clothes and the entire spa system.



The system generates an electro-magnetic field that agitates calcium and other minerals in the water, causing them to create suspended crystals.



Hard water build up limits water flow and reduces the life of your spa.



The suspended crystals of hard water elements are retained in the filter cartridge leaving soft water in the spa.

Discover Pure Relaxation:

Every PureSpa™ comes with incredible premium features that will surpass all your standard expectations. Designed for leisure, PureSpa™ offers an affordable and convenient spa experience, providing ultimate comfort and relaxation at the touch of a button.

For Friends and Family



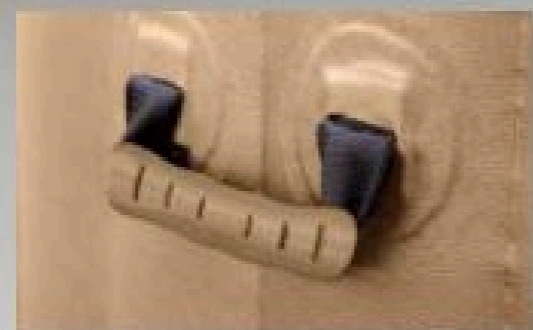
Available in 4 and 6 person sizes

Simple Control



Easy-to-use control panel

Easy Portability and Storage

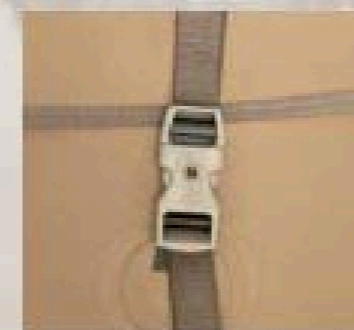


Grab handles for comfort and ease of transport



Carry bag for easy storage and transport

Safety



Spa Cover with locking buckles to prevent unauthorized access

Minimum Heat Loss



Spa Cover to minimize heat loss



Ground Cloth to protect bottom surface and minimize heat loss

Easy Maintenance



Floating Chemical Dispenser (Excluding Jet & Bubble Deluxe model)



Replaceable filter cartridge

Enjoy Bubbles Anywhere



PureSpa™ BY INTEX® Bubble Massage

There's nothing like a soothing, warm soak surrounded by thousands of therapeutic bubbles after a long day. Incorporating over 120 heated bubble jets with Intex's unique patented Fiber-Tech™ Technology, PureSpa™ Bubble Massage is like no other inflatable spa in the world today.

Over 120 Ways to Pamper Yourself

Typical Spas

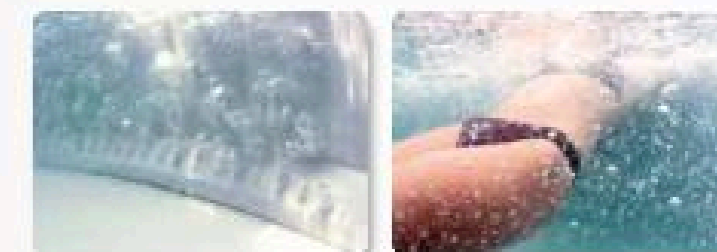


Cold Air
Bubbles

PureSpa™



Heated Air
Bubbles



Immerse yourself in over 120 heated bubble jets

Bubble Massage

BY INTEX®



Sahara Tan Round

Available in 4 and 6 person sizes

Pure Performance

PureSpa™ provides relaxation at the touch of a button. The easy-to-use control panel activates the high performance bubble jets surrounding the interior of the spa for a refreshing massage. The heating system adjusts to fit your personal temperature preference, allowing a stress-free spa experience. PureSpa™ provides simple maintenance with easy-to-replace filter cartridges for lasting enjoyment for up to 6 people.



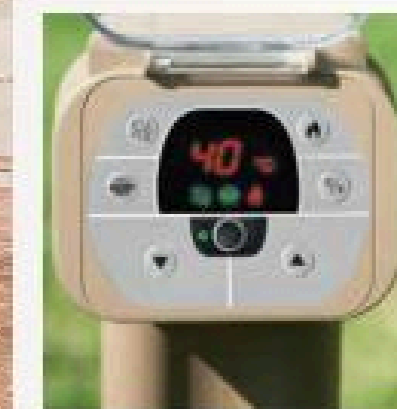
Specifications

Item #	28403E	284046N/EX	28473E	284746N/EX	28407E	284086N/EX
Seating Capacity	4	4	4	4	6	6
Water Capacity	210 gal	79GL	210 gal	79GL	290 gal	1,098L
Shape	Round	Round	Round	Round	Round	Round
Inner/Outer Size						
Height	28"	71cm	28"	71cm	28"	71cm
Material	Laminate PVC	Laminate PVC	Laminate PVC	Laminate PVC	Laminate PVC	Laminate PVC
Shipping Weight	104.2 lb	47.8 kg	126.7 lb	58.1 kg	112.9 lb	51.6 kg
Bubble Air Blower	1.1 hp/110-120V	800W/220-240V	1.1 hp/110-120V	800W/220-240V	1.1 hp/110-120V	800W/220-240V
Heater	1,300W/110-120V	2,200W/220-240V	1,300W/110-120V	2,200W/220-240V	1,300W/110-120V	2,200W/220-240V
Flow Rate	460 gal/hr	1,741 L/hr	460 gal/hr	1,741 L/hr	460 gal/hr	1,741 L/hr
Temperature Range	68° ~ 104°F	20° ~ 40°C	68° ~ 104°F	20° ~ 40°C	68° ~ 104°F	20° ~ 40°C
Temperature Rise	2° ~ 3°F/hr	1.5° ~ 2.5°C/hr	2° ~ 3°F/hr	1.5° ~ 2.5°C/hr	1° ~ 2°F/hr	1° ~ 2°C/hr
Bubble Jets	120	120	120	120	140	140
Hard Water System	10 W	10 W	10 W	10 W	10 W	10 W

#28403E/28473E/28407E: English/Spanish (110-120V)
 #284046N/284746N/284086N: 12 Languages (220-240V)
 #284086N/284746N/284086N: English/French/Spanish/Italian (220-240V)
 US Patent No. 9,642,771 | No. 9,254,240 | No. 9,463,582 | No. 9,567,762



Over 120 Ways to Pamper Yourself



User-friendly interface



Over 120 soothing bubble jets for relaxation



28473E and 284746N/EX include Energy Efficient Spa Cover 28523 **NEW**



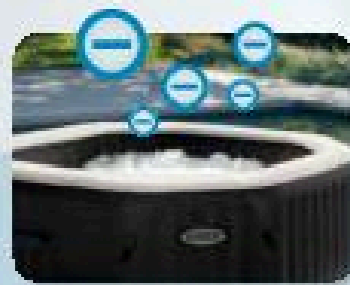
HYDRO AERATION TECHNOLOGY™

Intex is proud to bring you a new level of relaxation and water purity, by bringing revolutionary water aeration techniques into your backyard portable hot tub.



IMPROVED WATER CIRCULATION

Hydro Aeration Technology™ enhances filtration efficiency. Fine particles clump together and settle to the bottom of the spa during the aeration process, making it easier to remove and filter particles through the filtration system. Improved filtration and circulation create a cleaner, healthier, and more refreshing spa experience.



INCREASED NEGATIVE IONS AT WATER SURFACE

The aeration process increases negative ion concentration by infusing spa water with air. Increased negative ions have been proven to improve the air freshness around the spa as it removes air pollutants and neutralizes free radicals that affect air quality.



ENHANCED POWERFUL AND SOOTHING BUBBLE JETS

By mixing air with water, the total volume of bubbles is increased to give you a more vigorous and soothing massage.



The Ultimate Spa Experience:
Reward Yourself with the Best

PureSpa™ BY INTEX® Jet & Bubble Deluxe



The PureSpa™ Jet & Bubble Deluxe Spa combines all the perks of a high-performance jet massager and a bubble massage spa into one. This addition to the PureSpa™ series unites a top-of-the-line saltwater sanitation system with a unique hard water treatment system to provide an unparalleled spa experience.

The Ultimate in Inflatable Spas

Typical Spa



Cold Air Bubbles

PureSpa™



Heated Air Bubbles



High-powered adjustable water pressure massage jets for relaxation



Over 120 soothing bubble jets

Jet & Bubble Deluxe

BY INTEX®



Available in 4 and 6 person sizes

Pure Performance

Experience the luxury of over 120 soothing bubble jets and high-performing massage jets while you relax. The combination of the state-of-the-art hard water treatment system and the advanced saltwater sanitation system creates an all-inclusive, premium spa experience.



Specifications

Item #	28453E	28454GN/EX	28455E	28456/EX
Seating Capacity	4	4	6	6
Water Capacity	210 gal	795L	290 gal	1,098L
Shape	Octagon*	Octagon*	Octagon*	Octagon*
Inner/Outer Size				
Height	28"	71 cm	28"	71 cm
Material	Laminate PVC	Laminate PVC	Laminate PVC	Laminate PVC
Shipping Weight	156.0 lb	70.8 kg	170.3 lb	77.0 kg
Bubble Air Blower	1.1 hp/110-120V	800W/220-240V	1.1 hp/110-120V	800W/220-240V
Jet Pump	0.9 hp/110-120V	690W/220-240V	0.95 hp/110-120V	700W/220-240V
Heater	1,300W/110-120V	2,200W/220-240V	1,300W/110-120V	2,200W/220-240V
Flow Rate	460 gal/hr	1,741 L/hr	460 gal/hr	1,741 L/hr
Temperature Range	68° - 104°F	20° - 40°C	68° - 104°F	20° - 40°C
Temperature Rise	2° - 3°F/hr	1.5° - 2.5°C/hr	1° - 2°F/hr	1° - 2°C/hr
Jet Nozzles	4	4	6	6
Bubble Jets	120	120	140	140
Jet Pressure	7 - 10 psi	0.48 - 0.69 bar	7 - 10 psi	0.48 - 0.69 bar
Hard Water System	10 W	10 W	10 W	10 W
Saltwater System	30 W	30 W	30 W	30 W

#28453E/28455E: English/Spanish (110-120V)

#28454GN/28456: 12 Languages (220-240V)

#28454EX/28456EX: English/French/Spanish/Italian (220-240V)

US Patent No.9,642,771 | No.9,254,240

US Patent No.9,498,582 | No.9,967,782

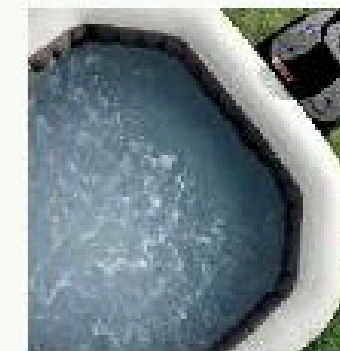
US Patent No.0773,063



Where Pure Luxury Meets Pure Technology



User-friendly interface



The unbeatable combination of powerful, adjustable massage jets and over 120 heated bubble jets



Includes 2 spa headrests



Includes extra 2 filter cartridges

Accessories

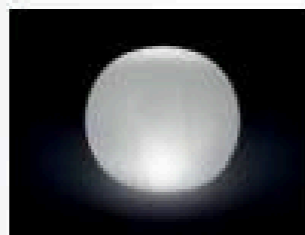
Introducing our line of high quality PureSpa™ accessories that are versatile and convenient for a more enjoyable spa experience.

Energy Efficient Spa Cover #28523/E NEW

- This cover enhances the Spa performance while improving the energy efficiency by as much as 50%
- High density thermal-resistant foam provides extra insulation and minimizes heat loss
- Spa stays hot easier - with only half the energy use and half the energy cost
- Protects spa from punctures, scratches and weather damage
- Includes belt with locking safety buckle
- Fits 4-person round Bubble Massage models
- 1 ea, 36.5 lb (16.6 kg)



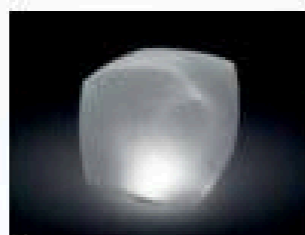
LED Pool Light Globe #28693/E



- 9" x 8 1/2" (23cm x 22cm) inflated
- Illuminates in 4 different colors
- Two lighting modes: static white light or smooth color changing mode
- 2-hour auto shut-off
- Requires 3 AAA batteries
- 12 ea, 8.1 lb (3.7 kg)



LED Pool Light Cube #28694/E

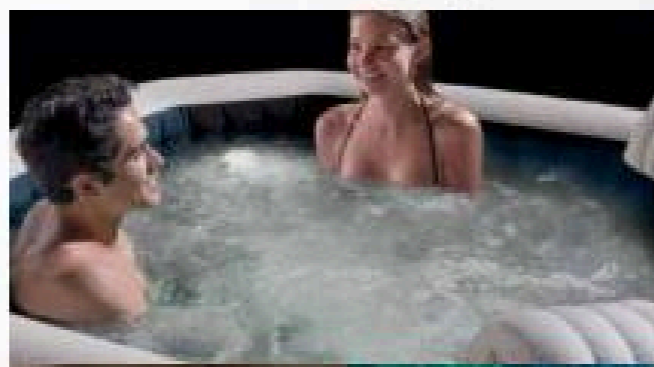


- 9" L x 9" W x 8 1/2" H (23cm x 23cm x 22cm) inflated
- Illuminates in 4 different colors
- Two lighting modes: static white light or smooth color changing mode
- 2-hour auto shut-off
- Requires 3 AAA batteries
- 12 ea, 8.2 lb (3.7 kg)



#28503/E Multi-Colored Battery Operated LED Light for Bubble Spa

- Create the perfect mood and ambience while you relax
- Illuminates up to 5 different colors: white, green, teal, blue & purple
- Two lighting modes: single color or color changing mode
- 2-hour auto shut-off
- Requires 3 AAA batteries
- Wattage: 1.0W
- 8 ea, 8.8 lb (4.0 kg)



#28504/E Multi-Colored LED Light with Hydroelectric Power for Jet & Bubble Deluxe

- Brighten up your spa with this Multi-Colored LED Light with built-in hydroelectric generator. No external power source needed!
- Attaches to the SPA jet port (water flow above 600 gph)
- Illuminates up to 5 different colors: white, green, teal, blue & purple
- Two lighting modes: single color or color changing mode
- Wattage: 0.6W
- 6 ea, 5.6 lb (2.6 kg)



Spa Headrest (Foam) #28505/E NEW



- The ergonomically shaped Spa Headrest offers maximum comfort while relaxing in the soothing spa
- Soft polyurethane foam provides comfortable, cushioned surface
- Provides head and neck support
- Securely attaches to the spa wall
- Easy to re-position or remove for convenience
- Set up size: 11" L x 9" W x 6 3/4" H (28cm x 23cm x 17cm)
- Patent pending
- 6 ea, 8.4 lb (3.8 kg)

Spa Headrest (Inflatable) #28501/E



- The convenient Spa Headrest allows you to comfortably rest your head while relaxing in the soothing spa
- Designed to be placed on top of the spa wall
- Weighted down (when filled with water) to secure the headrest in place
- Removable for convenience
- Dimensions: 15 1/2" L x 11 1/2" W x 9" H (39cm x 30cm x 23cm)
- 12 ea, 9.1 lb (4.2 kg)

Spa Cup Holder #28500/E



- The PureSpa™ Cup Holder with refreshment tray is designed to securely attach to the spa wall
- Keeps beverages and snacks close by while you relax
- Removable for convenience
- Holds 2 standard size beverage containers
- Dimensions: 10 1/2" L x 8 1/2" W x 7" H (26cm x 22cm x 18cm)
- 8 ea, 10.2 lb (4.6 kg)

Spa Seat #28502/E



- The PureSpa™ Seat allows you to sit comfortably in the spa, raising a person's height with two different height options: 3" (7.5cm) or 7 1/2" (19cm)
- Removable for convenience
- Slip resistant
- Dimensions: 18 1/2" L x 14" W x 8 1/2" H (47cm x 36cm x 22cm)
- 2 ea, 20.2 lb (9.2 kg)

Rechargeable Handheld Vacuum #28620/E



US Patent No.D785,260

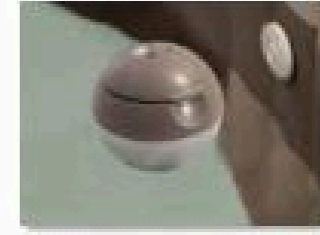
- Keep spa water clean by vacuuming out dirt and debris
- Strong built-in Ni-MH rechargeable batteries (50min per charge) for powerful suction capability
- Suitable for use with all PureSpas and above ground pools up to 18" diameter
- 94" (2.39m) lightweight telescoping aluminum pole
- Shaft adapter to fit longer/wider telescoping aluminum poles
- Two interchangeable brush heads
- Automatic shut-off feature when vacuum is not submerged in water
- IPX8 waterproof switch for added protection against water submersion
- USB cable included for convenient recharging (plug not included)
- 4 ea, 29.0 lb (13.2 kg)

Spa Maintenance Kit #28004/E



- Curved brush for inner sidewall care
- Durable mesh skimmer net
- Scrubber pad to help eliminate dirt and grime
- 6 ea, 9.4 lb (4.3 kg)

Floating Dispenser #29044/E NEW



- Conveniently sized for one chlorine or bromine tablet up to 1 1/2" (3.8cm)
- Suitable for all portable inflatable spas
- Made of durable non-corrosive polypropylene material
- Tablets not included
- 15 ea, 3.1 lb (1.4 kg)

Filter Cartridge #29001/E



- Twin Pack**
- 6 ea, 4.0 lb (1.8 kg)