

# 2021

## INTERNATIONAL

Intex Development Co., Ltd.  
9th Floor, Everbright Centre,  
108 Gloucester Road, Wanchai, Hong Kong  
Tel: (852) 2827-0000 • Fax: (852) 2311-8200  
E-mail: info@intexdevelopment.com  
Web: www.intexdevelopment.com

## EUROPE

Intex Trading B.V.  
Venneveld 9, 4705 RR Roosendaal,  
The Netherlands  
Tel: (31) 165-593920 • Fax: (31) 165-593969  
E-mail: info@intexcorp.nl  
Web: www.intexcorp.nl

Unitex Service (France) S.A.S.  
Z.A. de Milleure Bois du Ban - N°4  
71480 LE MIROIR, France  
Tel: (33) 385 75 64 64 • Fax: (33) 385 75 64 65  
E-mail: info@intexcorp.com.fr  
Web: www.intex.fr

## USA

Intex Recreation Corp.  
P. O. Box 1440  
Long Beach, CA 90801-1440  
USA  
Tel: (310) 549-5400 • Fax: (310) 513-6905  
Web: www.intexcorp.com

## Intex Trading S.R.O.

Benešovská 23  
101 00 Praha 10, Czech Republic  
Tel: (420) 267 312 645 • Fax: (420) 267 312 552  
E-mail: info@intexcorp.cz  
Web: www.intexdevelopment.com

## Unitex Italia S.R.L.

Via Tintorri 15/6 H  
20863 Concorezzo (MB), Italy  
Tel: (39) 039 2296998  
E-mail: commerciale@intexcorp.it  
Web: www.intexitalia.com

Disney  
**FROZEN II**

Disney  
**Winnie  
the Pooh**

Disney • PIXAR  
**Cars**

# SUMMER 2021

# INTEX®



© Disney Visit the Disney Website at www.disney.com  
© Disney Based on the "Winnie the Pooh" works by A.A. Milne and E.H. Shepard.  
© Disney/Pixar  
Printed in China  
®™ Trademarks used in some countries of the world under license from Intex Marketing Ltd. to Intex Development Co., Ltd.  
G.P.O Box 28829, Hong Kong, and Intex Recreation Corp., P.O. Box 1440, Long Beach, CA 90801.

# INTEX®





**Ages 3+**  
**58053NP**  
**Beach Ball**

- 24" (61cm)
- 8ga (0.20mm) vinyl
- Pegable box  
 36 ea, 12.9 lb (5.9 kg)



**Ages 3-6**  
**56652EU**  
**Deluxe Arm Bands**

- 9" x 6" (23cm x 15cm)
- 10ga (0.25mm) vinyl
- 2 air chambers each
- Pegable box
- 40-66 lb (18-30 kg)  
 max weight limit  
 36 pairs, 11.7 lb (5.3 kg)



**Ages 3+**  
**57516NP**  
**Ride-On**

- 43" x 33" (1.09m x 84cm)
- 10ga (0.25mm) vinyl
- Heavy-duty handle
- Repair patch
- Shelf box
- 88 lb (40 kg)  
 max weight limit  
 6 ea, 14.7 lb (6.7 kg)



**Ages 3-6**  
**58392NP**  
**Pool Cruiser**

- 43" x 28" (1.09m x 71cm)
- 10ga (0.25mm) vinyl
- Repair patch
- Pegable box
- 59 lb (27 kg)  
 max weight limit  
 12 ea, 21.3 lb (9.7 kg)

**Ages 3-6**  
**58260NP**  
**Swim Ring**

- 20" (51cm)
- 8ga (0.20mm) vinyl
- Pegable box  
 36 ea, 9.9 lb (4.5 kg)





© Disney/Pixar

**Ages 1-3**  
**57101NP**  
**Play Box Pool**

- 34" L x 34" W x 10" H (86cm x 86cm x 25cm) inflated
- 10ga (0.25mm) vinyl
- Soft inflatable floor
- Capacity 6½" (17cm) of wall height: 15 gal (57L)
- Repair patch
- Shelf box 6 ea, 14.0 lb (6.4 kg)



Soft Inflatable Floor

**Ages 3+**  
**28103NP**  
**Easy Set® Pool**

- Approximate set-up size 72" x 20" (1.83m x 51cm)
- Top ring: 11ga (0.28mm); Wall: 18ga (0.45mm); Bottom: 10ga (0.25mm)
- Capacity 16" (41cm) of wall height: 232 gal (880L)
- Repair patch
- Shelf box 2 ea, 13.6 lb (6.2 kg)



**Ages 6+**  
**57478NP**  
**Swim Center™ Pool**

- 103" L x 69" W x 22" H (2.62m x 1.75m x 56cm) inflated
- 12ga (0.30mm) vinyl
- 2 air chambers each with combo valve for quick inflation and deflation
- Capacity 14" (36cm) of wall height: 203 gal (770L)
- Repair patch
- Shelf box 2 ea, 23.3 lb (10.6 kg)



All Items: (Excluding 28103NP and 57478NP)

# Disney FROZEN II



© Disney

**Ages 3-6**  
**56640EU**  
**Deluxe Arm Bands**

- 9" x 6" (23cm x 15cm)
- 10ga (0.25mm) vinyl
- 2 air chambers each
- Pegable box
- 40-66 lb (18-30 kg) max weight limit
- 36 pairs, 11.6 lb (5.3 kg)



**Ages 3+**  
**58021NP**  
**Beach Ball**

- 20" (51cm)
- 8ga (0.20mm) vinyl
- Pegable box
- 36 ea, 9.9 lb (4.5 kg)



**Ages 3-6**  
**56201NP**  
**Swim Ring**

- 20" (51cm)
- 8ga (0.20mm) vinyl
- Pegable box
- 36 ea, 9.9 lb (4.5 kg)



**Ages 3+**  
**58153NP**  
**Olaf Mat**

- 55" x 41" (1.40m x 1.04m)
- 10ga (0.25mm) vinyl
- Repair patch
- Shelf box
- 88 lb (40 kg) max weight limit
- 6 ea, 16.0 lb (7.3 kg)



**Ages 3+**  
**56515NP**  
**Small Island**

- 50½" x 7½" (1.28m x 19cm) inflated
- 12ga (0.30mm) vinyl
- Repair patch
- Shelf box
- 88 lb (40 kg) max weight limit
- 6 ea, 25.3 lb (11.5 kg)



# Disney FROZEN II



© Disney



**Ages 6+**  
**58469NP**  
**Swim Center™ Pool**

- 103" L x 69" W x 22" H (2.62m x 1.75m x 56cm) inflated
- 12ga (0.30mm) vinyl
- 2 air chambers each with combo valve for quick inflation and deflation
- Capacity 14" (36cm) of wall height: 203 gal (770L)
- Repair patch
- Shelf box
- 2 ea, 23.3 lb (10.6 kg)

**Ages 3-6**  
**48632NP**  
**Playhouse**

- 54" L x 43" W x 48" H (1.37m x 1.09m x 1.22m) inflated
- 10ga (0.25mm) vinyl
- Repair patch
- Shelf box
- 3 ea, 27.9 lb (12.7 kg)



All Items: (Excluding 58469NP)

# Disney Winnie the Pooh



**Ages 3+**  
**58025NP**  
**Beach Ball**

- 20" (51cm)
- 8ga (0.20mm) vinyl
- Pegable box
- 36 ea, 9.9 lb (4.5 kg)



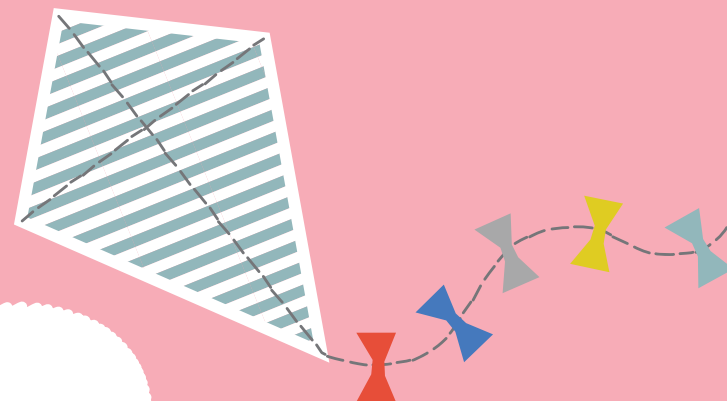
**Ages 1-3**  
**56663EU**  
**Small Deluxe Arm Bands**

- 8" x 6" (20cm x 15cm)
- 8ga (0.20mm) vinyl
- 2 air chambers each
- Pegable box
- 25-40 lb (11-18 kg) max weight limit
- 36 pairs, 9.5 lb (4.3 kg)



**Ages 3-6**  
**58228NP**  
**Swim Ring**

- 20" (51cm)
- 8ga (0.20mm) vinyl
- Pegable box
- 36 ea, 9.9 lb (4.5 kg)



# Disney Winnie the Pooh



**Ages 1-3**  
**58415NP**  
**Baby Pool**

- 43" L x 40" W x 28" H (1.09m x 1.02m x 71cm) inflated
- 10ga (0.25mm) vinyl
- Built-in sunshade
- Soft inflatable floor for extra comfort
- Capacity 4 7/8" (12cm) of wall height: 11 gal (41L)
- Repair patch
- Shelf box 6 ea, 17.1 lb (7.8 kg)



**Ages 2+**  
**58915NP**  
**Three Ring Pool**

- 58" x 13" (1.47m x 33cm) inflated
- 9ga (0.23mm) rings; 7ga (0.18mm) floor
- Capacity 9" (23cm) of wall height: 87 gal (330L)
- Repair patch
- Shelf box 6 ea, 20.3 lb (9.2 kg)



Soft Inflatable Floor



**Ages 1-3**  
**58433NP**  
**Baby Spray Pool**

- 55" L x 55" W x 4" H (1.40m x 1.40m x 10cm) inflated
- 10ga (0.25mm) vinyl
- Built-in sprayer attaches to garden hose
- Capacity 3 1/2" (9cm) of wall height: 30 gal (115L)
- Repair patch
- Shelf box 6 ea, 14.6 lb (6.6 kg)

